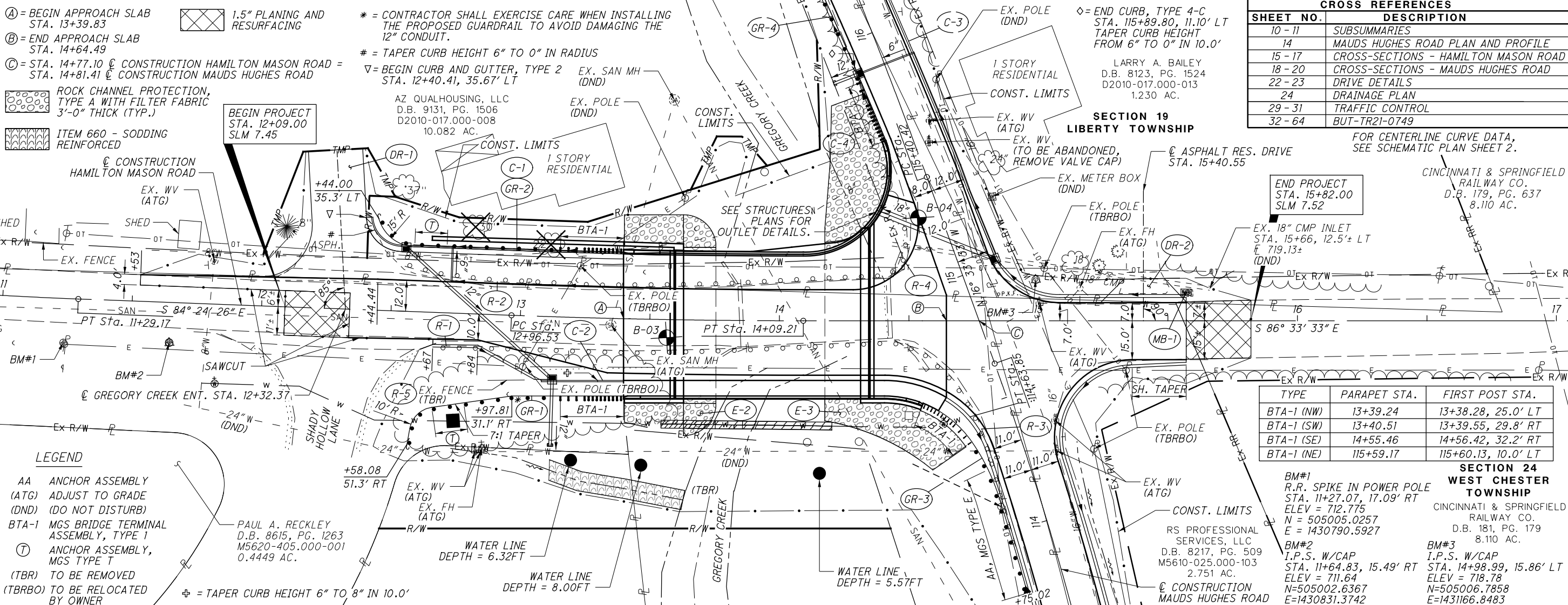


S:\Design\Projects\Hammonson\B2107491\Submittals\Final Tracings_Submittal_07-30-2019\Hamilton Mason Bridge CADD Files\000000\Design\Roadway\Sheets\Plan Sheet with Water Line Potholes.dgn 4/30/20



- LEGEND**
- AA ANCHOR ASSEMBLY
 - (ATG) ADJUST TO GRADE
 - (DND) (DO NOT DISTURB)
 - BTA-1 MGS BRIDGE TERMINAL ASSEMBLY, TYPE 1
 - (T) ANCHOR ASSEMBLY, MGS TYPE T
 - (TBR) TO BE REMOVED
 - (TBRBO) TO BE RELOCATED BY OWNER

1.5" PLANING AND RESURFACING

* = CONTRACTOR SHALL EXERCISE CARE WHEN INSTALLING THE PROPOSED GUARDRAIL TO AVOID DAMAGING THE 12" CONDUIT.
 # = TAPER CURB HEIGHT 6" TO 0" IN RADIUS
 ∇ = BEGIN CURB AND GUTTER, TYPE 2
 EX. SAN MH (DND)
 EX. POLE (DND)
 AZ QUALHOUSING, LLC
 D.B. 9131, PG. 1506
 D2010-017.000-008
 10.082 AC.

- (A) = BEGIN APPROACH SLAB STA. 13+39.83
- (B) = END APPROACH SLAB STA. 14+64.49
- (C) = STA. 14+77.10 @ CONSTRUCTION HAMILTON MASON ROAD = STA. 14+81.41 @ CONSTRUCTION MAUDS HUGHES ROAD

ROCK CHANNEL PROTECTION, TYPE A WITH FILTER FABRIC 3'-0" THICK (TYP.)

ITEM 660 - SODDING REINFORCED

BEGIN PROJECT STA. 12+09.00 SLM 7.45

SECTION 19 LIBERTY TOWNSHIP

CROSS REFERENCES

SHEET NO.	DESCRIPTION
10 - 11	SUBSUMMARIES
14	MAUDS HUGHES ROAD PLAN AND PROFILE
15 - 17	CROSS-SECTIONS - HAMILTON MASON ROAD
18 - 20	CROSS-SECTIONS - MAUDS HUGHES ROAD
22 - 23	DRIVE DETAILS
24	DRAINAGE PLAN
29 - 31	TRAFFIC CONTROL
32 - 64	BUT-TR21-0749

FOR CENTERLINE CURVE DATA, SEE SCHEMATIC PLAN SHEET 2.

END PROJECT STA. 15+82.00 SLM 7.52

TYPE	PARAPET STA.	FIRST POST STA.
BTA-1 (NW)	13+39.24	13+38.28, 25.0' LT
BTA-1 (SW)	13+40.51	13+39.55, 29.8' RT
BTA-1 (SE)	14+55.46	14+56.42, 32.2' RT
BTA-1 (NE)	115+59.17	115+60.13, 10.0' LT

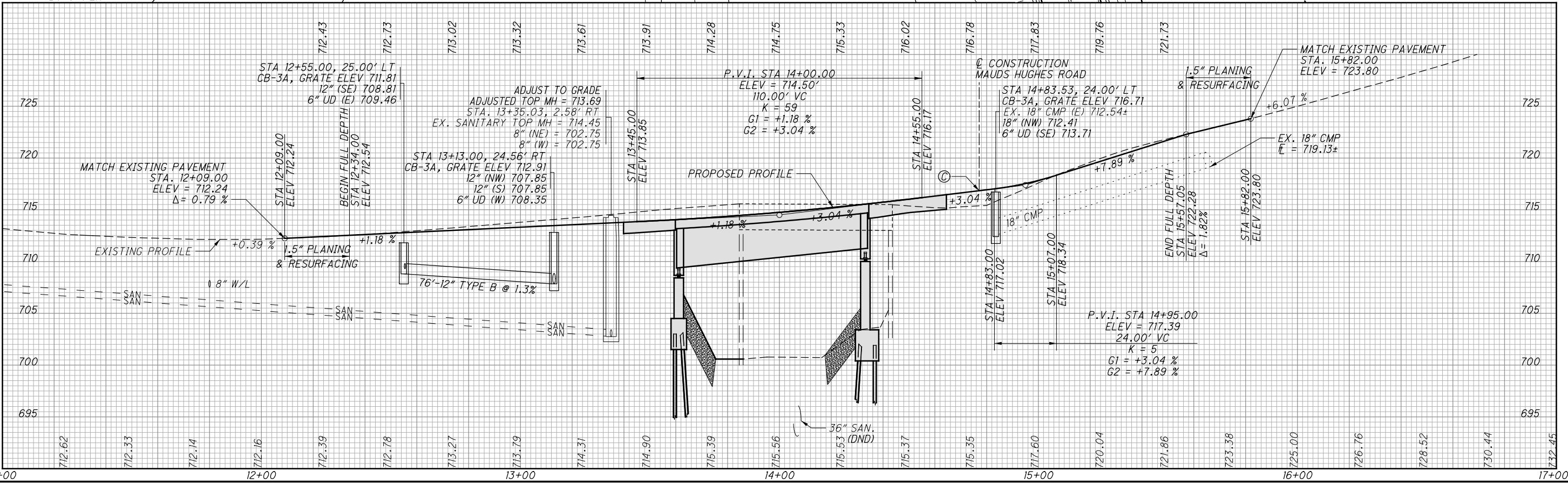
SECTION 24 WEST CHESTER TOWNSHIP

CINCINNATI & SPRINGFIELD RAILWAY CO.
 D.B. 181, PG. 179
 8.110 AC.

BM#1
 R.R. SPIKE IN POWER POLE
 STA. 11+27.07, 17.09' RT
 ELEV = 712.775
 N = 505005.0257
 E = 1430790.5927

BM#2
 I.P.S. W/CAP
 STA. 11+64.83, 15.49' RT
 ELEV = 711.64
 N=505002.6367
 E=1430831.3742

BM#3
 I.P.S. W/CAP
 STA. 14+98.99, 15.86' LT
 ELEV = 718.78
 N=505006.7858
 E=1431166.8483



CALCULATED
 CHECKED
WATER LINE POTHOLE LOCATIONS
 STA. 11+00.00 TO STA. 17+00.00